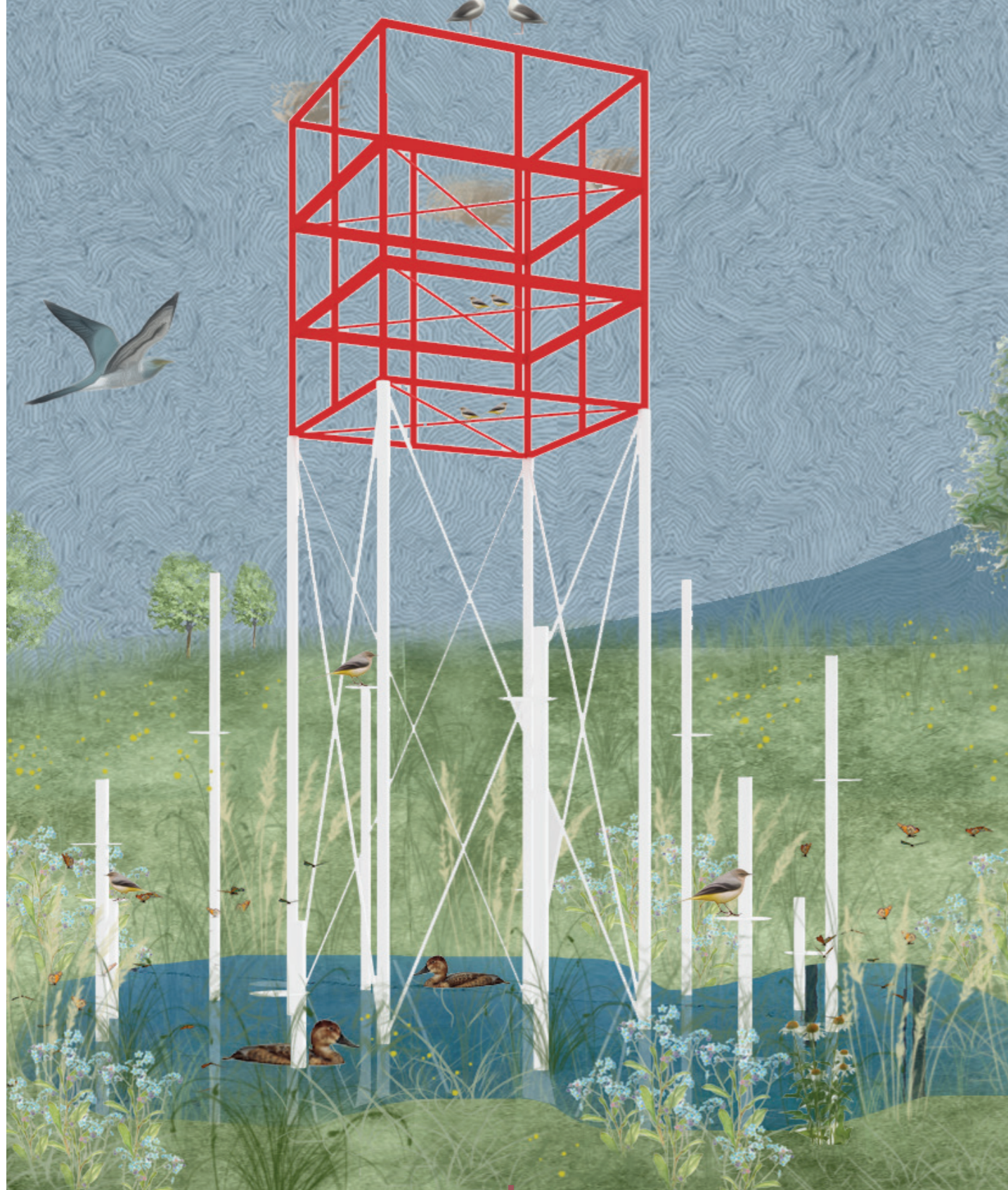


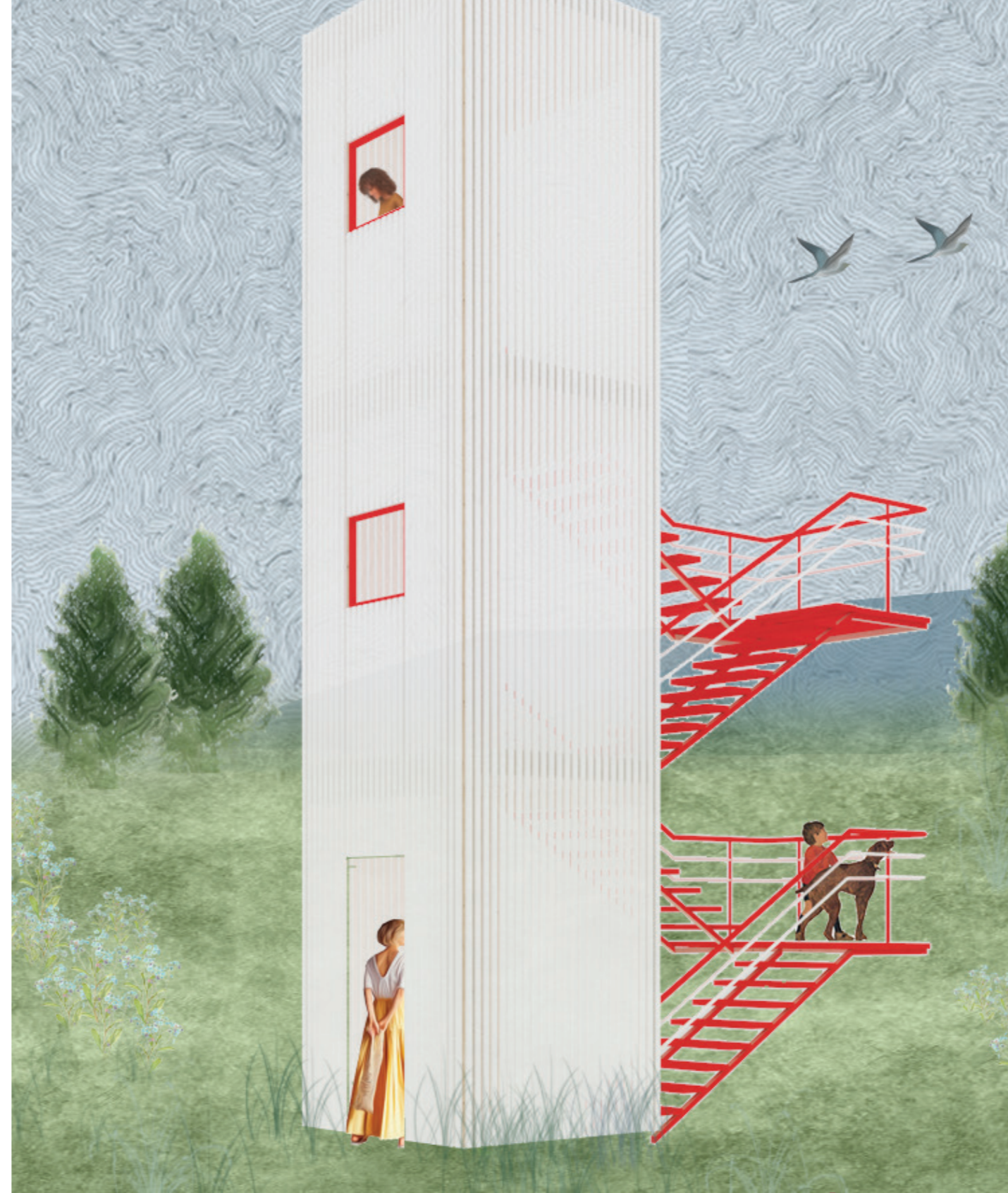
—Rest—

the pavilion uses the window frames from the old ferry as well as columns, this tower is dedicated to nature and offers a place to rest, drink water and eat for migrating birds throughout the seasons



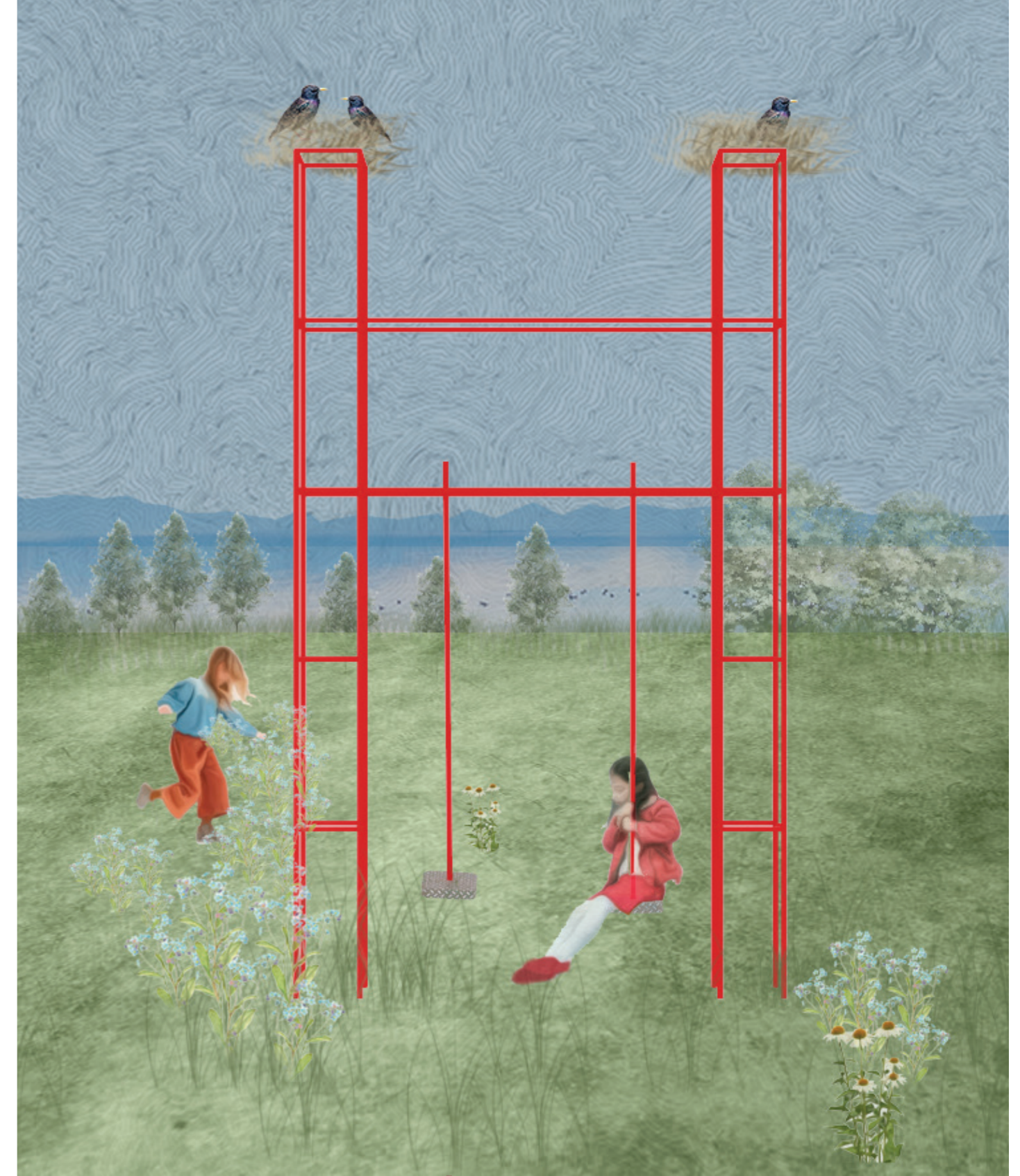
—Mountain view—

the pavilion uses the stairs from the old ferry as well as the window frames, wood is added to support the structure. It blocks the surroundings and frames a large view towards the mountains and smaller view towards the lake through the windows



—Swing—

the pavilion is built from railings from the old ferry it is dedicated to play and situated at the perfect spot to gaze at the fields and the lake while taking a swing



*"Embracing the village's policentricity, we envisioned four additional peak points scattered throughout the area. These smaller towers are dedicated to celebrating different aspects and attributes of the village, thoughtfully placed to guide visitors on a captivating journey."*

A divergent new road would allow for the city centre to be car free therefore welcome more people to walk through and spent time there.

A paved street with the same pattern or colour throughout the shore, main road, connecting roads, and city centre would automatically force vehicles to slow down and signal special continuity to bypassers.

—Open air—

the pavilion uses the old ferry benches and part of its railing for the screen construction. it is not only a place to entertain but also a place that offers the opportunity for the community to gather, interact and create and experience art together



—Lake view—

the facade of the tower is built from structural elements from the old ferry's ceilings. opposed to its sister tower on the other side of the shore it is dedicated to the lake. it blocks the view of the surroundings only to reveal it at the top.



