



**NEW LOCHAU VERANSTALTUNGSKALENDER** ▶

THE CALENDAR OF ACTIVITIES ON THE RIGHT IS BASED ON THE LATEST PROGRAM PUBLISHED BY THE LOCHAU CITY HALL FOR THE 2023.

WE ANALYZED AND SELECTED EVENTS WHICH COULD BE RELOCATED IN THE RESTAURANT/SQUARE TO REACTIVATE THE SHORELINE AND INTEGRATED NEW ONES WHICH COULD ENRICH THE ALREADY INTERESTING AGENDA OF THE VILLAGE.

| EXISTING                        | NEW | JANUARY |   |    |    |    | FEBRUARY |    |    |    | MARCH |    |
|---------------------------------|-----|---------|---|----|----|----|----------|----|----|----|-------|----|
|                                 |     | 2       | 9 | 16 | 23 | 30 | 6        | 13 | 20 | 27 | 6     | 13 |
| SEASONAL FESTIVALS              |     |         |   |    |    |    |          |    |    |    |       |    |
| CULTURAL CELEBRATIONS           |     |         |   |    |    |    |          |    |    |    |       |    |
| SPORTS AND OUTDOOR              |     |         |   |    |    |    |          |    |    |    |       |    |
| COMMUNITY AND SOCIAL EVENTS     |     |         |   |    |    |    |          |    |    |    |       |    |
| EDUCATIONAL AND WORKSHOP        |     |         |   |    |    |    |          |    |    |    |       |    |
| ENVIRONMENTAL AND NATURE EVENTS |     |         |   |    |    |    |          |    |    |    |       |    |
| MUSIC AND PERFORMANCE ARTS      |     |         |   |    |    |    |          |    |    |    |       |    |
| GASTRONOMIC EVENTS              |     |         |   |    |    |    |          |    |    |    |       |    |

**REFLECTIONS**

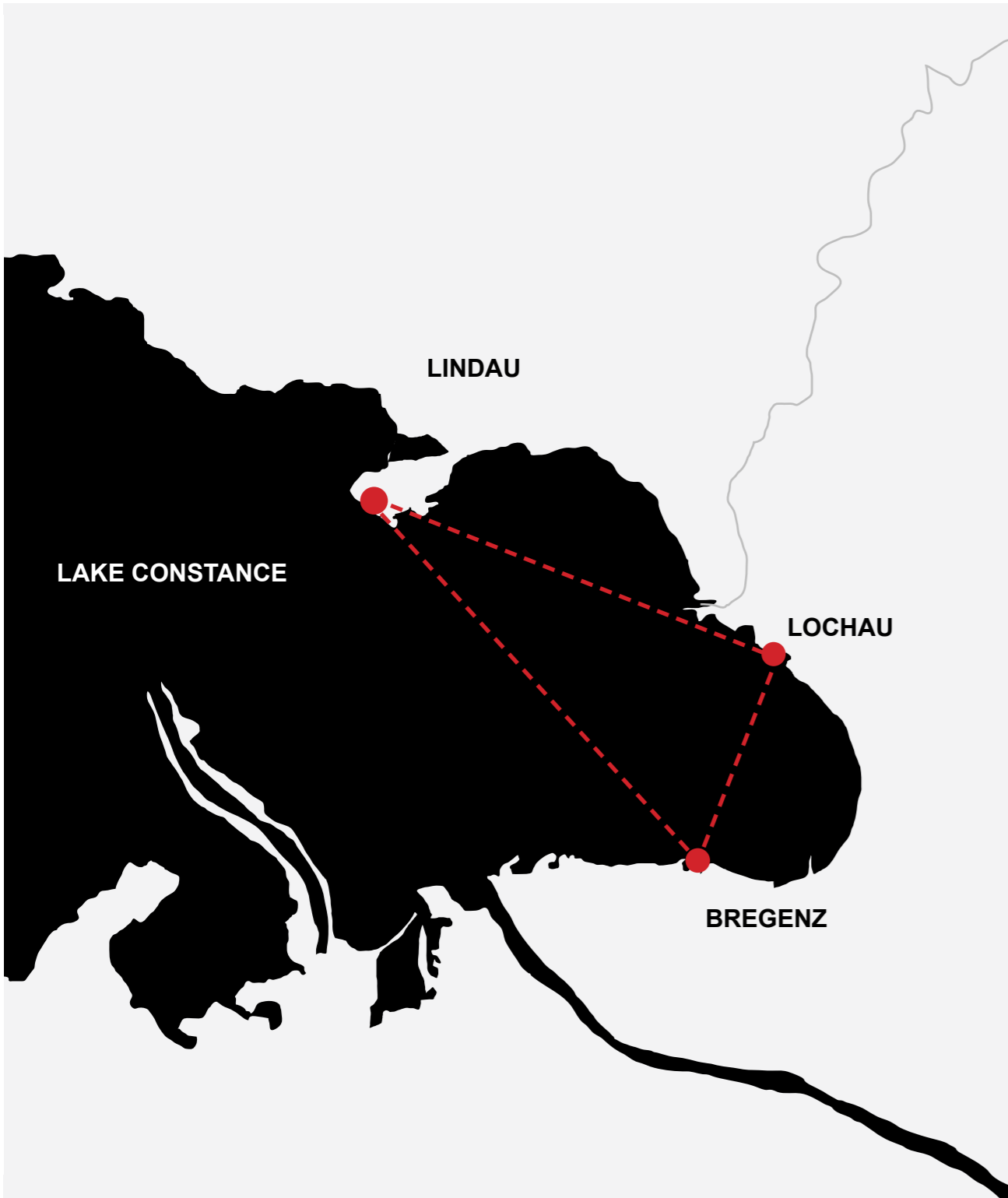
A new project on such a specific site requires a sensitive approach towards the landscape and the urban and a flexible yet assertive architectural response to what today looks like a chaotic composition of elements in the site area.

Our intervention is based on these different readings and positions: that of a unitary and democratic space, namely the Bodenseeplatz, and that of a flexible and evolutionary infrastructure open to future uses and interactions, namely the restaurant.

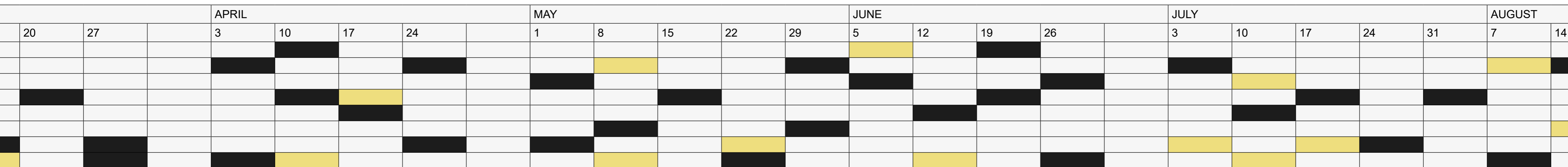
The aim of the presented project is not merely to fulfill the desired program but to define a new social space. This focal point can solidify the constellation with the neighboring urban areas and provide new opportunities for the local community and tourists.

By creating a new square overlooking Lake Constance and the nearby cities, the intention is not to compete but rather to complete what was missing.

**CONSTELLATION**



MASTERPLAN 1/2500



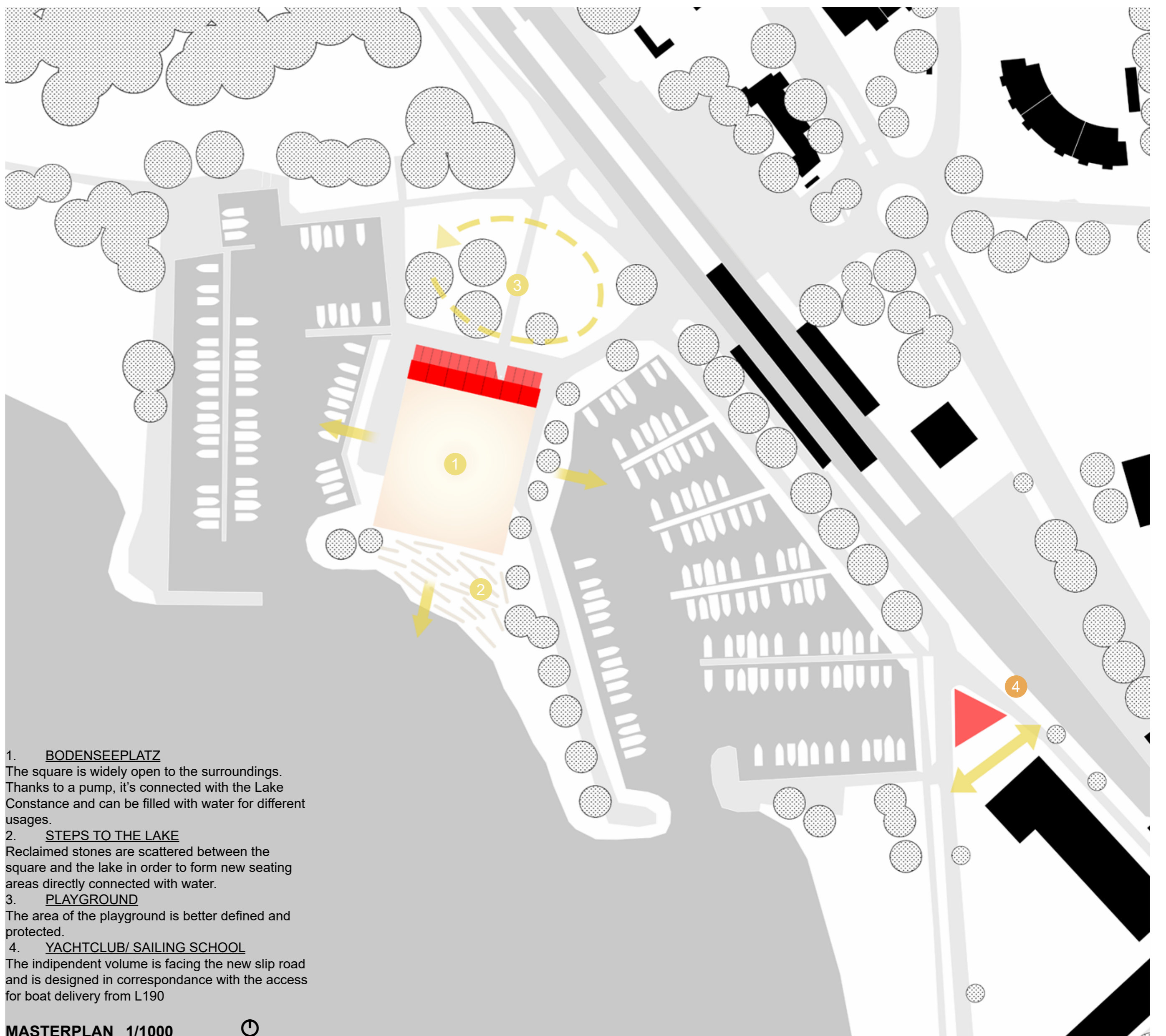
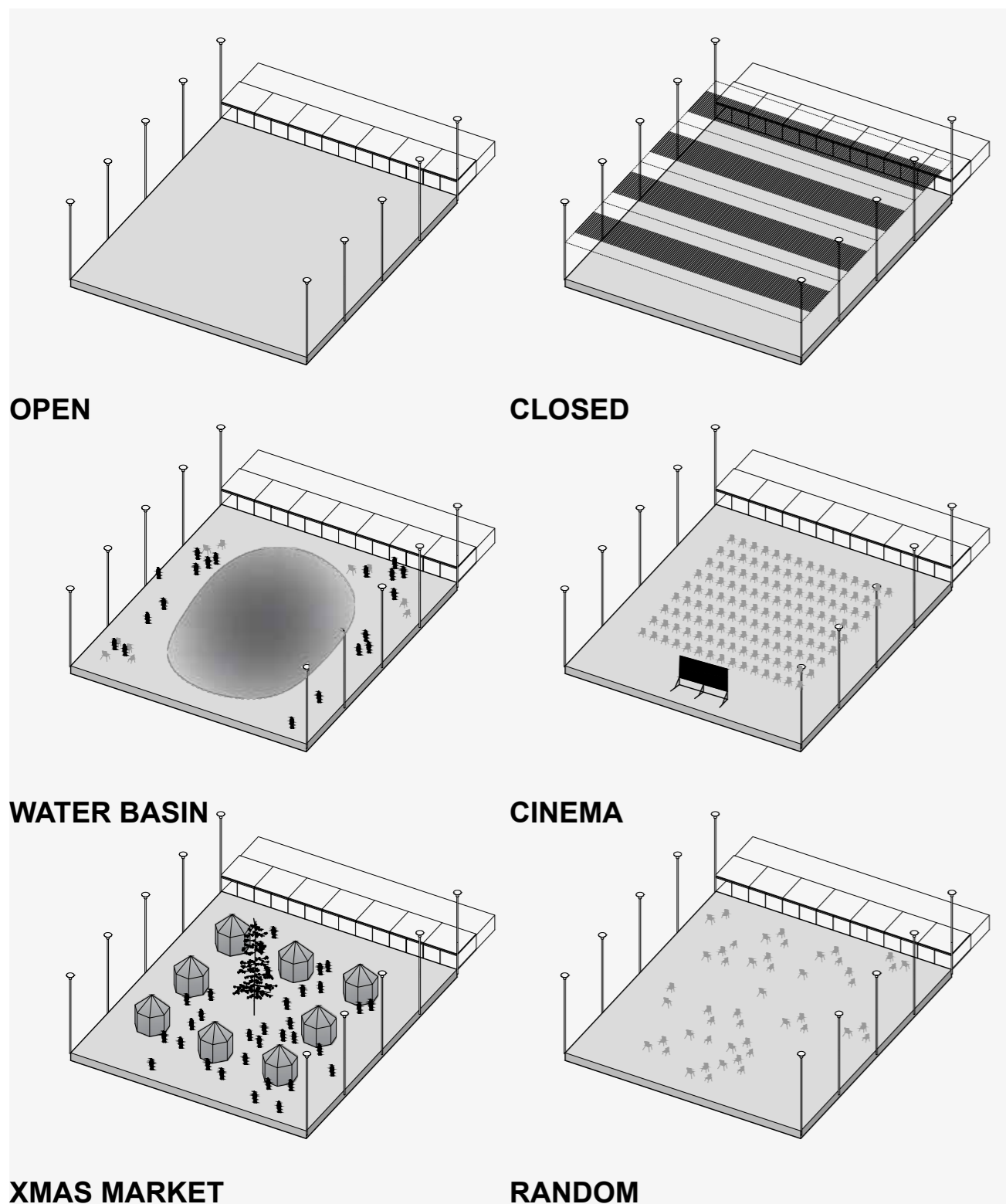
**TRANSFORMATIVE SQUARE**

The beating heart of the project is a transformative *platz* open to the most diverse scenarios. The aim is to create a catalyzer of new events and to reinforce the already busy agenda of Lochau with a new vibrant space.

The space is entirely covered with reclaimed Austrian stones and has a 42 by 48 meters dimension. The whole surface is slightly concave: an underground pump is connected with Lake Constance, and based on time or event, the square can be filled, becoming a water mirror or even a wading pool for toddlers and kids. Besides the scenographical effect, water also has a practical impact since it can help cool the air on the warmest day and create a controlled bath environment to attract birds and enhance the biodiversity of species.

On the long edges, a total of 10 light poles frame the perimeter of the square, making it recognizable from afar. Together with those, a system of deployable curtains is designed to close the roof of the square when needed.

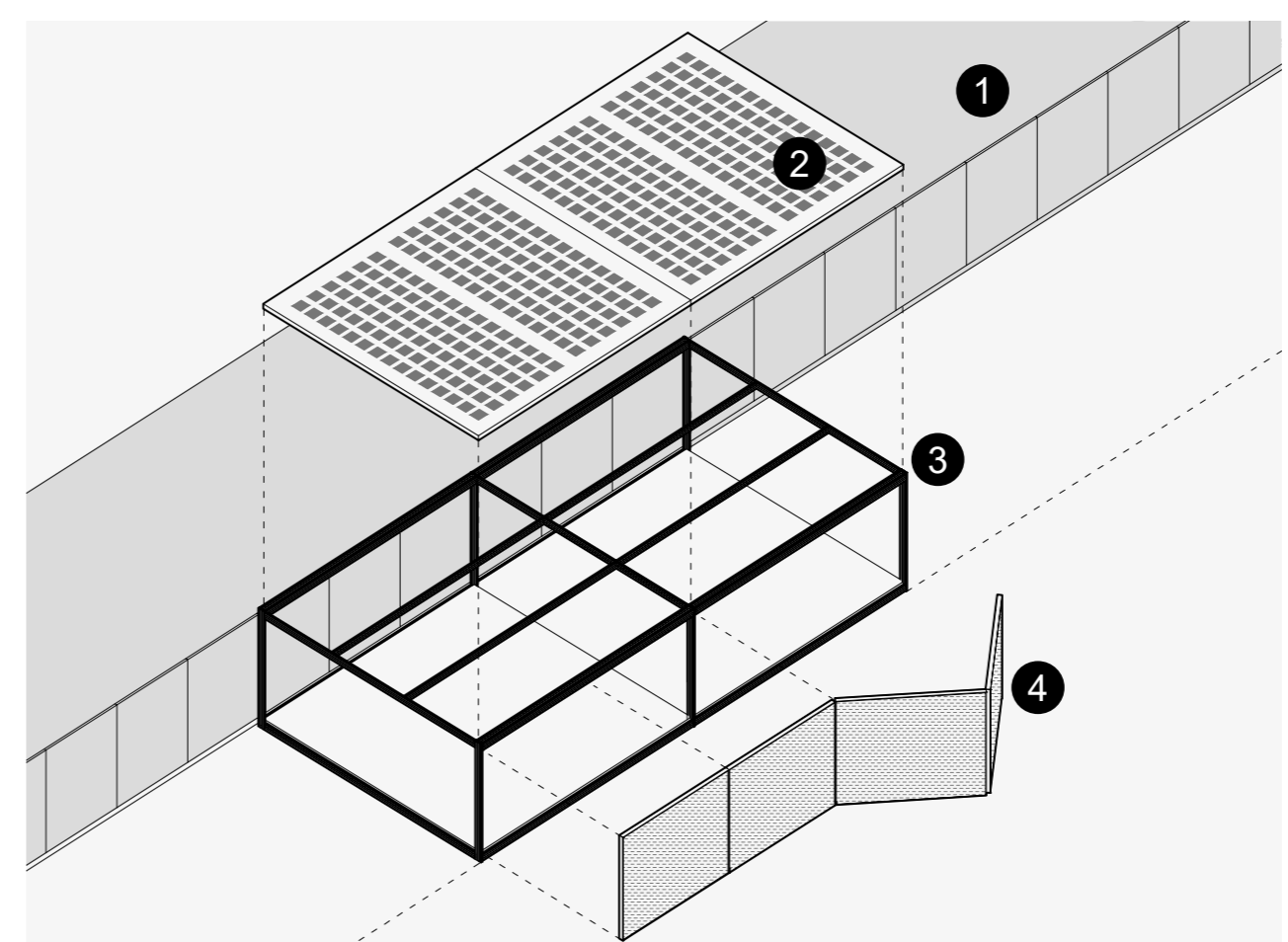
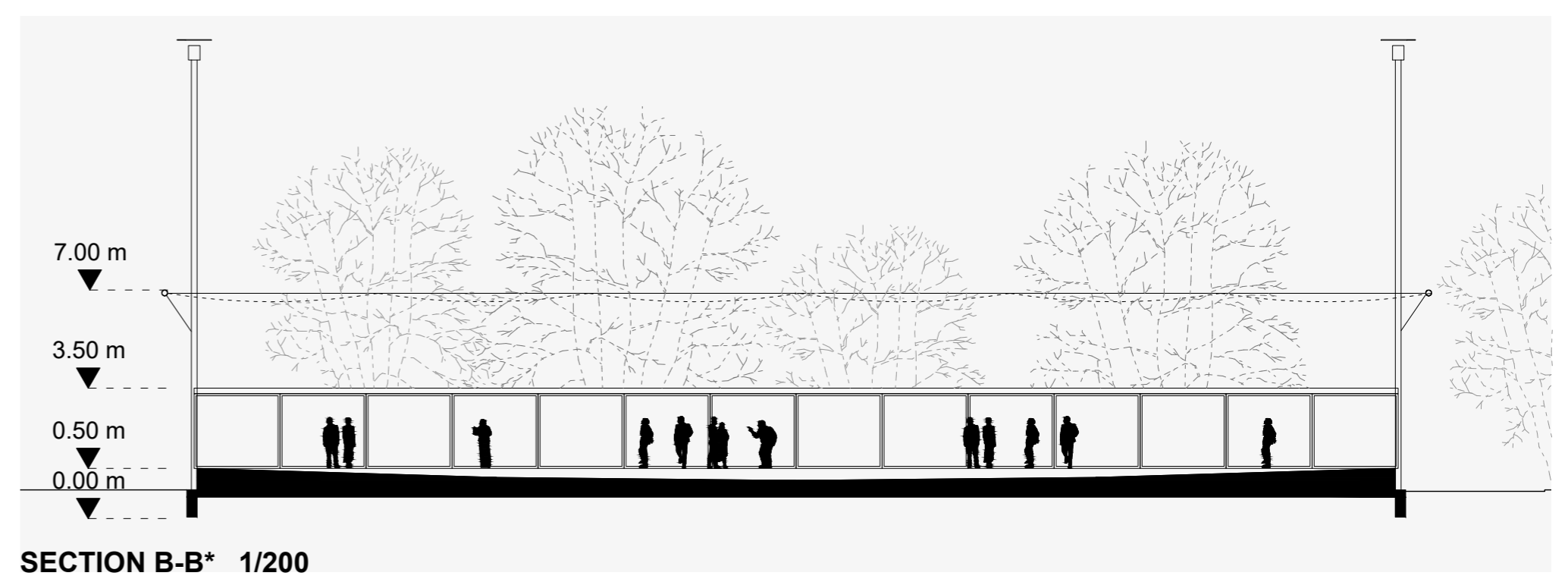
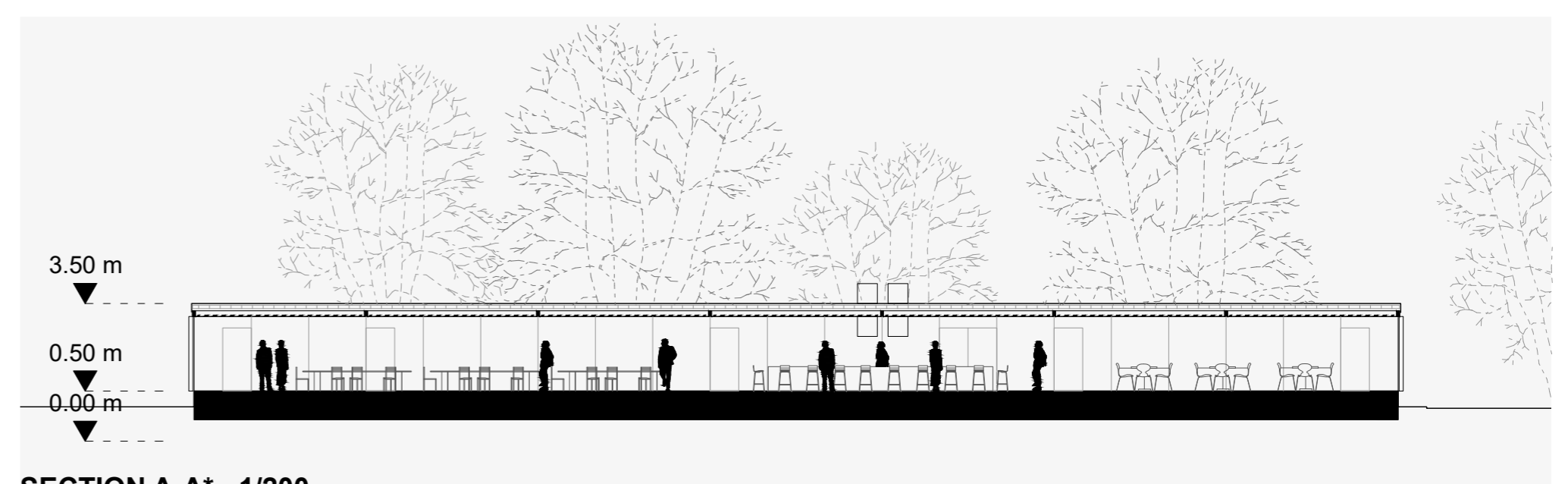
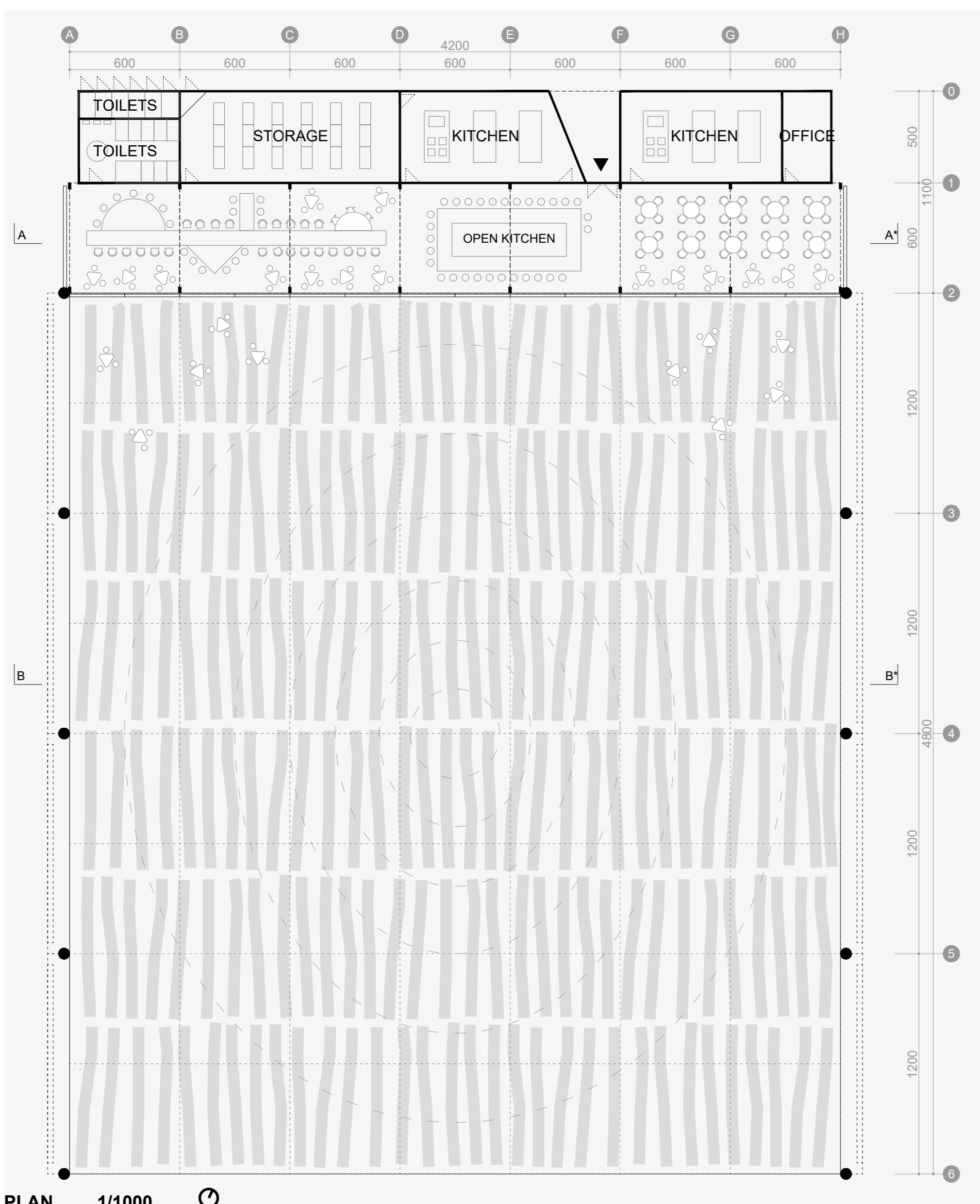
**THE BODENSEEPLATZ CAN BE**



- BODENSEEPLATZ**  
The square is widely open to the surroundings. Thanks to a pump, it's connected with the Lake Constance and can be filled with water for different usages.
- STEPS TO THE LAKE**  
Reclaimed stones are scattered between the square and the lake in order to form new seating areas directly connected with water.
- PLAYGROUND**  
The area of the playground is better defined and protected.
- YACHTCLUB/ SAILING SCHOOL**  
The independent volume is facing the new slip road and is designed in correspondence with the access for boat delivery from L190



| SEPTEMBER |       |       |       | OCTOBER |       |       |       | NOVEMBER |       |       |       | DECEMBER |       |       |       |       |       |       |
|-----------|-------|-------|-------|---------|-------|-------|-------|----------|-------|-------|-------|----------|-------|-------|-------|-------|-------|-------|
| 21        | 28    | 4     | 11    | 18      | 25    | 2     | 9     | 16       | 23    | 30    | 6     | 13       | 20    | 27    | 4     | 11    | 18    | 25    |
| Black     | Black | Black | Black | Black   | Black | Black | Black | Black    | Black | Black | Black | Black    | Black | Black | Black | Black | Black | Black |
| Black     | Black | Black | Black | Black   | Black | Black | Black | Black    | Black | Black | Black | Black    | Black | Black | Black | Black | Black | Black |
| Black     | Black | Black | Black | Black   | Black | Black | Black | Black    | Black | Black | Black | Black    | Black | Black | Black | Black | Black | Black |
| Black     | Black | Black | Black | Black   | Black | Black | Black | Black    | Black | Black | Black | Black    | Black | Black | Black | Black | Black | Black |



- ◀ CONSTRUCTION SYSTEM**
- BACKBONE**  
A modular system hosting all the facilities for the restaurant in order to work.
  - ROOF**  
A flat roof with lights and ventilation integrated. Solar panels on top guarantee the fully independency of the restaurant.
  - ALUMINIUM EXTRUDED PROFILES**  
A flexible, lightweight and economic system. Easy to dis/assemble or be expanded.
  - WINDOWS**  
A foldable glazed facade on the Piazza, fully openable.

PLAN 1/1000

SECTION A-A\* 1/200

SECTION B-B\* 1/200